

# ArtStart

2006

## TERM ONE PROGRAMMES



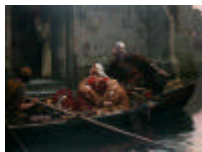
Antonio da Venezia  
St. Bartholomew c1376

### Portraits: Picturing People

Come and view a variety of portraits. Learn about how artists reflect the personal identity of the sitter through symbols and signs. An excellent link into making class portraits at the beginning of the school year.

### A Story to Tell

Learn to read visual symbols that will help to tell myths legends of artworks in the Auckland Art Gallery's collection. During their tour students will have the opportunity to view a variety of medieval and Renaissance paintings through to present day works.



Edmund Leighton, *In time of Peril*, 1897.

### The Still Life

Learn about the symbolism that artists attach to inanimate objects in still life paintings. Students will have the opportunity to complete a practical activity as part of their tour.



Frances Hodgkins, *Red Jug*.

## TERM TWO PROGRAMMES



Frank Leighton, *Melition*, 1882.



Colin McCahon, *Takaka Night and Day*, 1948.



David Medalla *Cloud Canyons*.

### Through the Ages

Use this opportunity to view some of Auckland Art Galleries collection pieces, focusing on how artworks can be analysed and understood.

**All children will interact with education staff through discussion.**

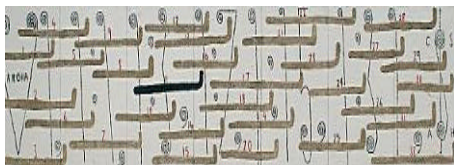
### LANDSCAPES

What does land mean to New Zealanders? What is different about our landscape? How is it portrayed in artworks? Student will also investigate a variety of compositional devices that landscape painters use in their artworks.

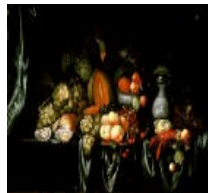
### Sculpture and Installations

Sculpture can be made from a wide variety of materials and processes. Students will explore the effect created by these different processes through both indoor and outdoor sculpture and installation works. We will explore how artists use the elements of shape, line, and form.

## TERM THREE PROGRAMMES



Peter Robinson, *Painting 1993*, 1993.



*Still Life with Fruit and Shellfish*  
by J. Bourjinnon.

### The Story of New Zealand Art

Explore aspects of our bi-cultural heritage - and examine the nature of New Zealand cultural identity.

Students will investigate and describe how present day artists working within particular cultural traditions use specific signs and symbols to communicate ideas about their identity.

### Colour

Colour is a vital instrument in an artist's hand. Come and learn about primary, secondary, contrasting and complementary colours

Will particularly suit Junior classes.

## TERM FOUR PROGRAMMES



### Painting Techniques and materials

Investigate the ideas communicated, techniques and materials used in several artists' work. Learn about differing surfaces that artists paint on, application tools, and types of paint. We will also investigate how artists use composition in their artworks.



### LINE, SHAPE, COLOUR

Find out about combination of bold simple shapes edged with solid black lines. Compare this to paintings where colour is used to invoke mood and express emotion.

## ArtStart

### Booking Information

Take advantage of our subsidised bus deal when booking (limited places)  
Admission charges are \$160.00 (for 1- 57 children), \$240.00 (for 58 - 100 children.)  
Extra charge may apply for schools outside of greater Auckland area  
Session length:: 1 1/4 hours.

Fax us on: 307 4547 Email us on: stacey.williams@aucklandcity.govt.nz Phone us on: 373 6345

**New Gallery Programme! Available from 17th July 2006.**

## ArtStudio

Students will examine examples of New Zealand and Pacific art that explore and express cultural Identity. Study of these works will then provide the motivation for students to design and create their own visual response in our **ArtStudio**.

**Signs and Symbols - Year 0 - 8**